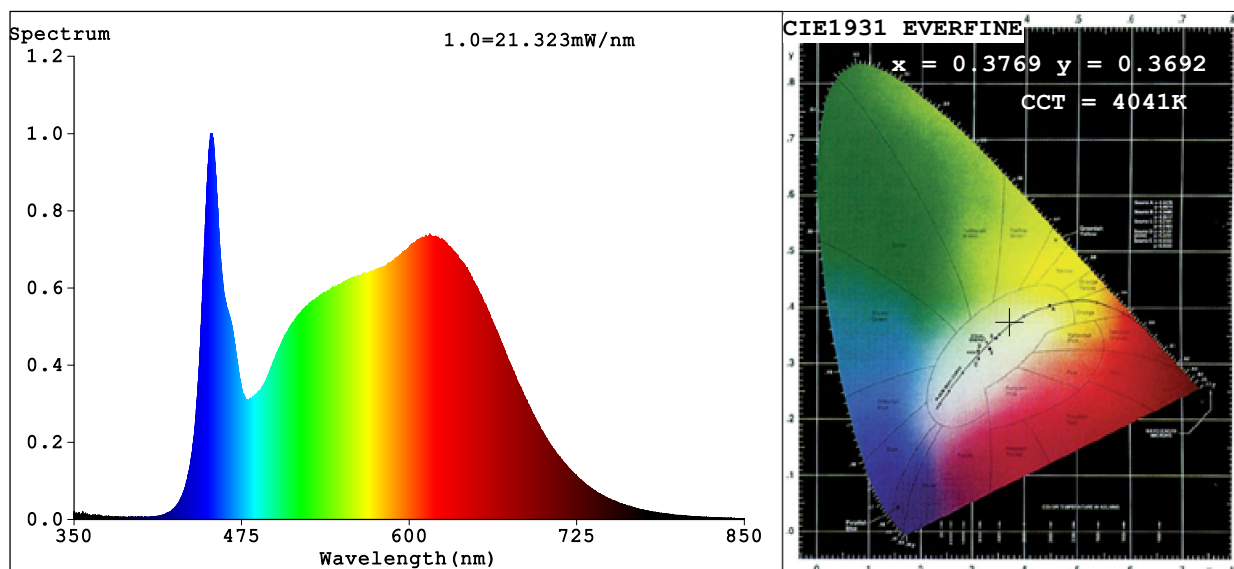


Spectrum Test Report



Color Parameters:

Chromaticity Coordinate: $x=0.3769$ $y=0.3692$ $u'=0.2258$ $v'=0.4977$

CCT=4041K (Duv=-0.0025) Dominant WL:Ld =580.5nm Purity=23.9%

Ratio:R=20.2% G=75.4% B=4.4%; Peak WL:Lp=451.9nm FWHM=22.9nm

Render Index:Ra=95.0 CRI=92.3 TM30:Rf=91 Rg=100

R1 =96 R2 =98 R3 =97 R4 =95 R5 =95 R6 =94 R7 =95

R8 =90 R9 =77 R10=94 R11=95 R12=71 R13=98 R14=98 R15=95

Photo Parameters:

Flux = 945.6 lm Eff. : 54.21 lm/W Fe = 3.301 W

Electrical parameters:

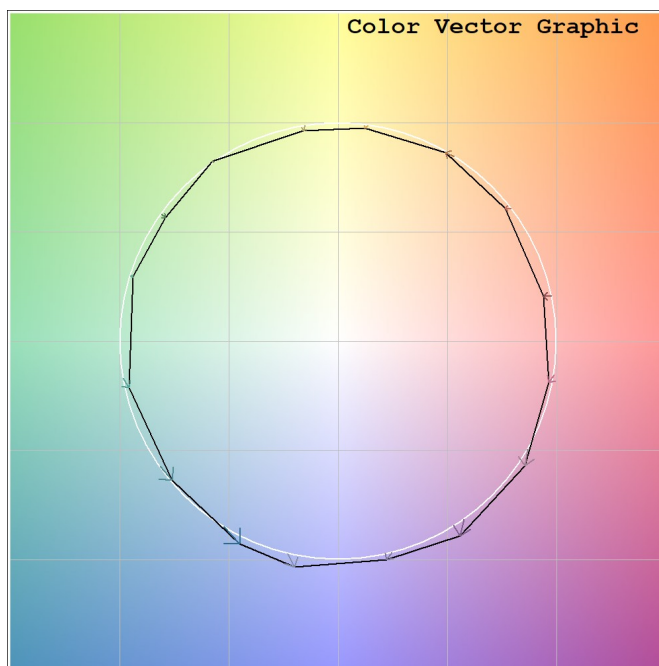
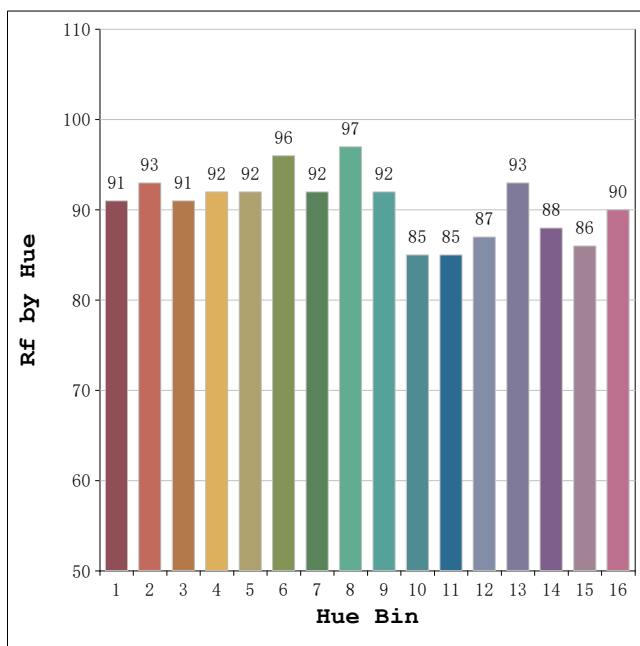
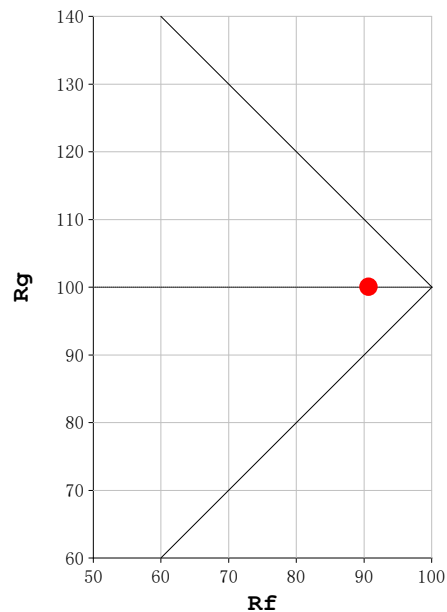
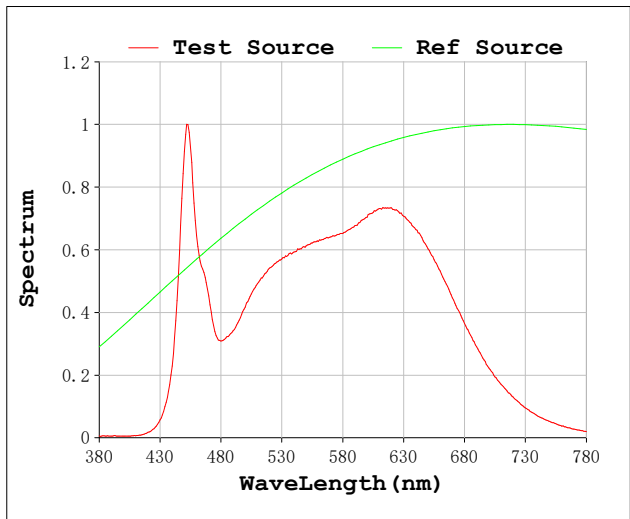
V = 230.06 V I = 0.08556 A P = 17.44 W PF = 0.8862

Status: Integral T = 1562 ms Ip = 44066 (67%)

Model:Spotia Zomm CTT Negro
 Tester:Sergio Carneros
 Temperature:20Deg
 Manufacturer:Luz Negra

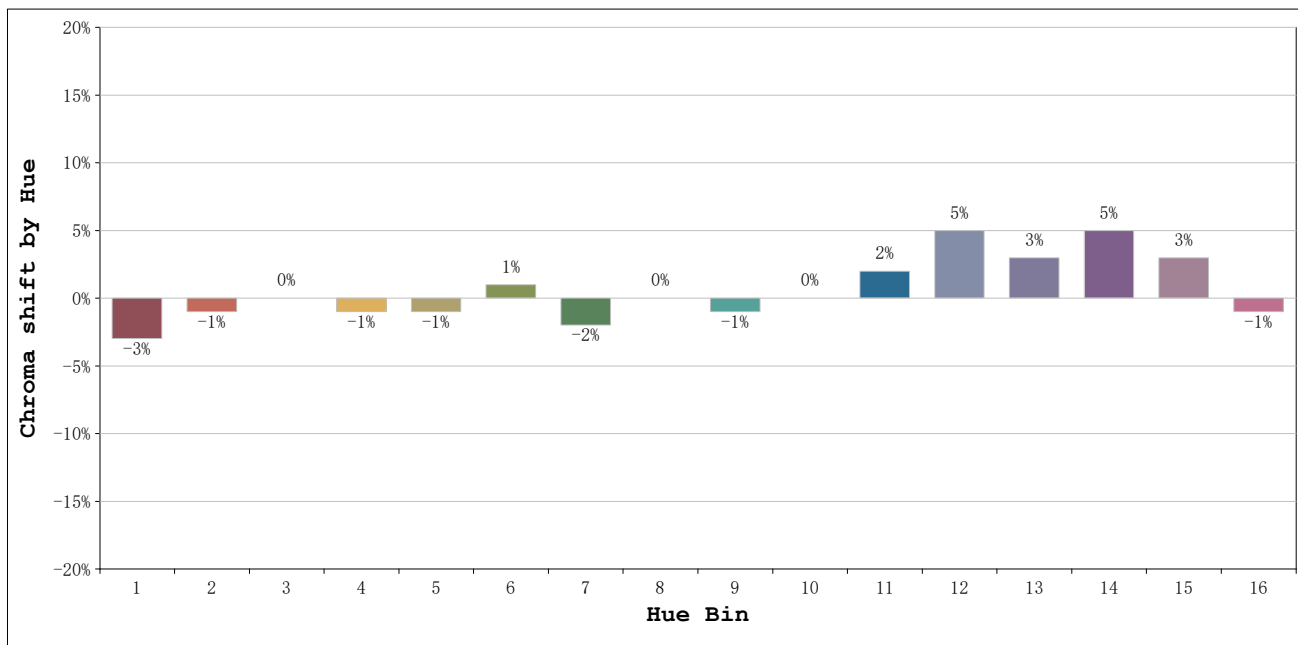
Number:4000k 20° Panal de abeja
 Date:2026-03-23 09:04:18
 Humidity:50%
 Remarks:1 unidad

Rf: 91 **CCT: 4041 K** **u': 0.2258**
Rg: 100 **Duv: -0.0025** **v': 0.4977**



Model:Spotia Zomm CTT Negro
 Tester:Sergio Carneros
 Temperature:20Deg
 Manufacturer:Luz Negra

Number:4000k 20° Panal de abeja
 Date:2026-03-23 09:04:18
 Humidity:50%
 Remarks:1 unidad

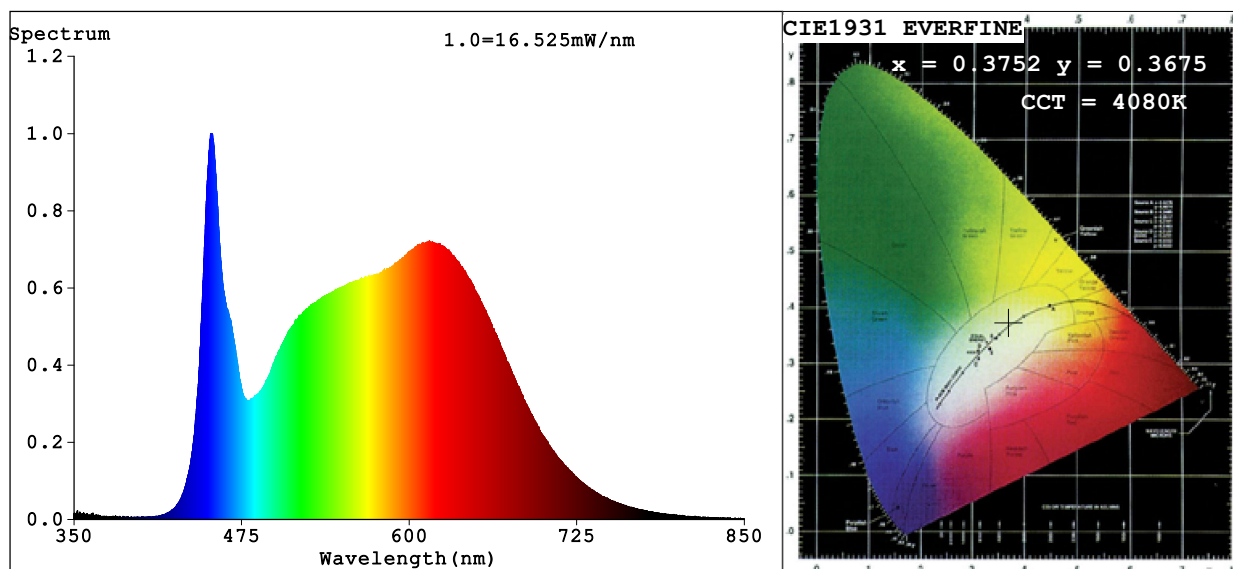


			Graphic shift(%)	
Hue Bin	Hue Angle	Rf	Chroma	Hue
1	0.0° - 22.5°	91	-3	0
2	22.5° - 45.0°	93	-1	2
3	45.0° - 67.5°	91	0	4
4	67.5° - 90.0°	92	-1	1
5	90.0° - 112.5°	92	-1	1
6	112.5° - 135.0°	96	1	0
7	135.0° - 157.5°	92	-2	0
8	157.5° - 180.0°	97	0	0
9	180.0° - 202.5°	92	-1	5
10	202.5° - 225.0°	85	0	8
11	225.0° - 247.5°	85	2	11
12	247.5° - 270.0°	87	5	4
13	270.0° - 292.5°	93	3	-2
14	292.5° - 315.0°	88	5	-5
15	315.0° - 337.5°	86	3	-6
16	337.5° - 360.0°	90	-1	-3

Model:Spotia Zomm CTT Negro
 Tester:Sergio Carneros
 Temperature:20Deg
 Manufacturer:Luz Negra

Number:4000k 20° Panal de abeja
 Date:2026-03-23 09:04:18
 Humidity:50%
 Remarks:1 unidad

Spectrum Test Report



Color Parameters:

Chromaticity Coordinate: $x=0.3752$ $y=0.3675$ $u'=0.2253$ $v'=0.4967$

CCT=4080K (Duv=-0.0028) Dominant WL:Ld =580.6nm Purity=22.9%

Ratio:R=20.1% G=75.4% B=4.5%; Peak WL:Lp=452.6nm FWHM=22.9nm

Render Index:Ra=95.1 CRI=92.4 TM30:Rf=91 Rg=100

R1 =96 R2 =98 R3 =97 R4 =95 R5 =95 R6 =94 R7 =95

R8 =90 R9 =78 R10=94 R11=95 R12=71 R13=98 R14=98 R15=95

Photo Parameters:

Flux = 720.4 lm Eff. : 41.36 lm/W Fe = 2.517 W

Electrical parameters:

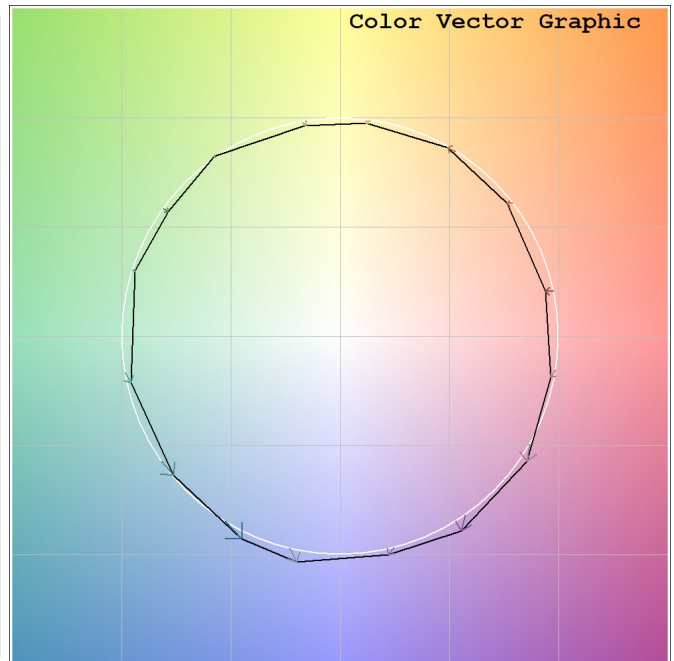
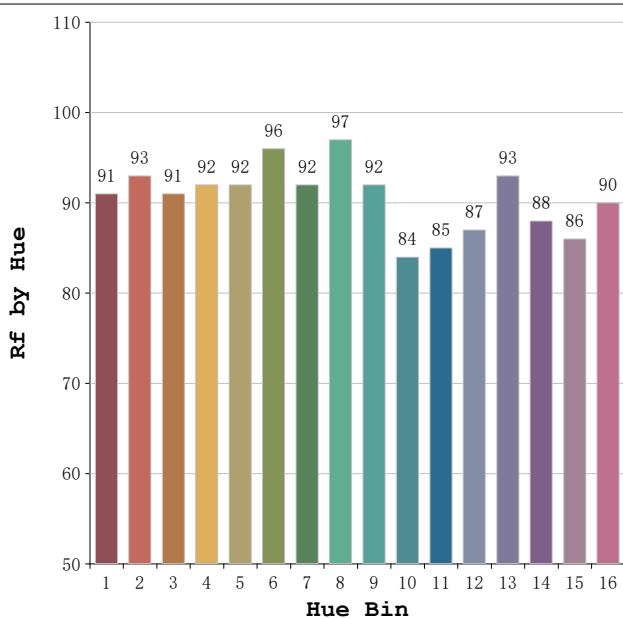
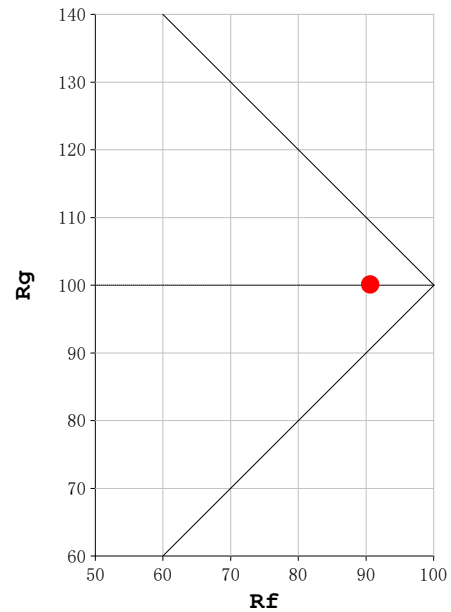
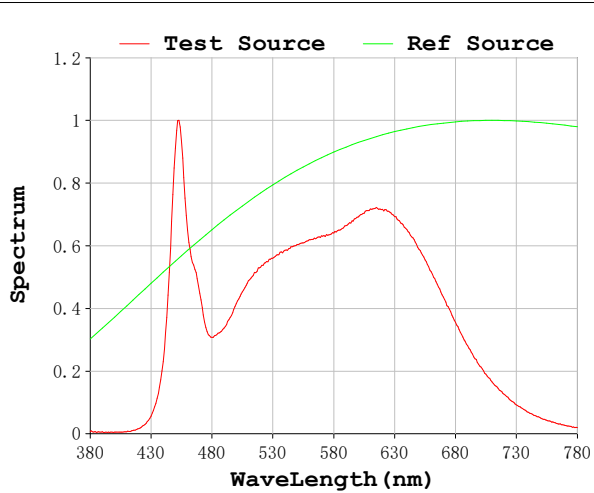
V = 230.07 V I = 0.08545 A P = 17.42 W PF = 0.8860

Status: Integral T = 1562 ms Ip = 33519 (51%)

Model:Spotia Zomm CTT Negro
 Tester:Sergio Carneros
 Temperature:20Deg
 Manufacturer:Luz Negra

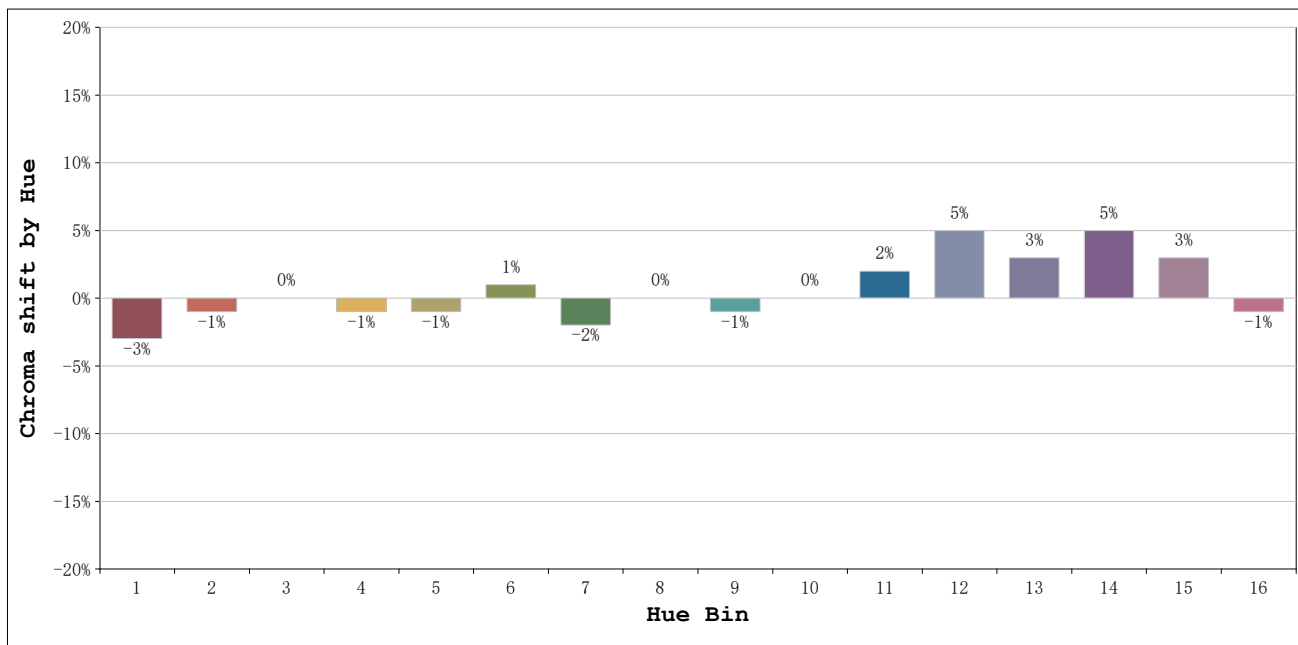
Number:4000k 60° Panal de abeja
 Date:2026-03-23 09:05:03
 Humidity:50%
 Remarks:1 unidad

Rf: 91 **CCT: 4080 K** **u': 0.2253**
Rg: 100 **Duv: -0.0028** **v': 0.4967**



Model:Spotia Zomm CTT Negro
 Tester:Sergio Carneros
 Temperature:20Deg
 Manufacturer:Luz Negra

Number:4000k 60° Panal de abeja
 Date:2026-03-23 09:05:03
 Humidity:50%
 Remarks:1 unidad



			Graphic shift(%)	
Hue Bin	Hue Angle	Rf	Chroma	Hue
1	0.0° - 22.5°	91	-3	0
2	22.5° - 45.0°	93	-1	2
3	45.0° - 67.5°	91	0	4
4	67.5° - 90.0°	92	-1	1
5	90.0° - 112.5°	92	-1	1
6	112.5° - 135.0°	96	1	0
7	135.0° - 157.5°	92	-2	0
8	157.5° - 180.0°	97	0	0
9	180.0° - 202.5°	92	-1	5
10	202.5° - 225.0°	84	0	8
11	225.0° - 247.5°	85	2	11
12	247.5° - 270.0°	87	5	4
13	270.0° - 292.5°	93	3	-2
14	292.5° - 315.0°	88	5	-5
15	315.0° - 337.5°	86	3	-6
16	337.5° - 360.0°	90	-1	-3

Model:Spotia Zomm CTT Negro
 Tester:Sergio Carneros
 Temperature:20Deg
 Manufacturer:Luz Negra

Number:4000k 60° Panal de abeja
 Date:2026-03-23 09:05:03
 Humidity:50%
 Remarks:1 unidad